



*Building the Future Together*



# LIST PRICE BOOK

**Effective July 1, 2022 · All Prior Issues Void**

# Index

---

## **Ball Valves**

1220NL.....	3
1220NLC .....	3
1220NLN .....	3
1223NL.....	3

## **Balancing Valves**

747NL.....	11
747PRSNL.....	4
787PRS .....	4
787 .....	11
787CC .....	11

## **Thermostatic Balancing Valves**

778 .....	5
778P .....	5
778V .....	5
778PV .....	5
778C.....	6
778PC .....	6
778VC.....	6
778PVC .....	6
778VCS .....	6
778PVCS.....	6
778W .....	7
778PW.....	7
778VW .....	7

778PVW .....	7
778VWS .....	7
778PVWS .....	7
778S.....	8
778PS.....	8
778VS.....	8
778PVS .....	8

## **Inline Check Valves**

30PRSNL.....	9
30XLC.....	9

## **Swing Check Valves**

80PRF (PRS) .....	10
80XLC.....	10

## **Strainers**

74PRSNL.....	4
--------------	---

## **Tankless Water Heater Valve Kits**

460NL.....	9
461NL.....	9
462NL.....	9

## **Accessories**

971 .....	10
530 Series .....	10
3406 .....	10

# Ordering Information

---

## **Freight Policy**

Cimberio Valve standard freight terms apply to all orders placed for delivery to a single destination in the continental United States. Contact your local distributor for specific details. Otherwise, freight items are F.O.B. Malvern Pennsylvania 19355. To read Cimberio Valve's complete freight policy, visit us online at [www.cimberiovalve.com](http://www.cimberiovalve.com) and click on the "Policies" link at the bottom of the page.

## **Order Acceptance**

Orders are accepted by fax (877-232-9246) or e-mail ([orders@cimberiovalve.com](mailto:orders@cimberiovalve.com)). Possession of our catalog or list price book by any person is not to be construed as an offer to sell to that person. All prices are subject to change without notice.

## **Minimum Order**

There is NO minimum order at Cimberio Valve.

## **Payment Terms**

All invoice terms are Net 30 from the date of Cimberio Valve invoices. Invoices may now be paid by credit card. Cimberio Valve accepts Visa, MasterCard, and Discover. Before paying by credit card you must fax a completed Credit Card Authorization Form to us at 877-232-9246. This form can be downloaded from [www.cimberiovalve.com](http://www.cimberiovalve.com) on the "Policies" page (the link appears on the bottom of the page) or you can request the form by phone at 877-228-9246.

## cimPRESS™ Ball Valves

Ideal for: residential/commercial potable water applications, sanitary applications, and heating/cooling applications.

### cimPRESS™ 1220NL



**NO-LEAD**

- **PRESS X PRESS**
- Manufactured ISO 9001
- Blast/impact proof stem
- Connections are flame and solder free
- Does not contain Lead

Order No.	Size	Box Qty. Carton/Inner	List Price
1220NL-04	1/2"	120/30	\$21.82
1220NL-06	3/4"	80/20	\$29.87
1220NL-07	1"	60/15	\$45.04
1220NL-08	1 1/4"	24/6	\$71.32
1220NL-09	1 1/2"	16/4	\$111.78
1220NL-10	2"	12/2	\$163.67

### cimPRESS™ 1220NLC



**NO-LEAD**

- **PRESS X PRESS**
- Manufactured ISO 9001
- Blast/impact proof stem
- Connections are flame and solder free
- Does not contain Lead

Order No.	Size	Box Qty. Carton/Inner	List Price
1220NLC-11	2 1/2"	4/2	\$357.82
1220NLC-12	3"	2/1	\$510.77
1220NLC-14	4"	2/1	\$863.28

### cimPRESS™ 1220NLN



**NO-LEAD**

- **PRESS X PRESS**
- Manufactured ISO 9001
- Blast/impact proof stem
- Connections are flame and solder free
- Does not contain Lead

#### Use with NIBCO® Press Systems® Only

For direct connection to hard drawn copper tube using only the appropriate tool, jaws, and adapter as specified by the manufacturer.

Order No.	Size	Box Qty. Carton/Inner	List Price
1220NLN-11	2 1/2"	4/2	\$355.99
1220NLN-12	3"	2/1	\$518.21
1220NLN-14	4"	2/1	\$807.65

NIBCO and NIBCO PRESS SYSTEM are registered trademarks of Nibco, Inc.

## cimPRESS™ x PEX

Ideal for: residential/commercial potable water applications, sanitary applications, and heating/cooling applications.

### cimPRESS™ 1223NL



- **PRESS X PEX**
- Manufactured ISO 9001
- Blast/impact proof stem
- IAPMO/UPC Approved; NSF-61 Approved
- Conforms to MSS-SP-110
- Patented Sure Connect O-ring design that ensures a watertight press connection

**NO-LEAD**

Order No.	Size	Box Qty. Carton/Inner	List Price
1223NL-04	1/2"	160/40	\$22.57
1223NL-06	3/4"	100/25	\$33.06
1223NL-07	1"	60/15	\$45.77

# cimPRESS™ Balancing Valves

Ideal for: residential/commercial potable water applications, sanitary applications, and heating/cooling applications.

## cimPRESS™ 747PRSNL



**NO HEAD**

- **Press X Press**
- Manufactured ISO 9001
- Patented dual O-ring deep socket design that ensures a superior, straighter, positive watertight press connection
- Superior fixed orifice design provides 95% maximum balancing accuracy
- Integral memory stop eliminates rebalancing after service
- One-piece construction with balance regulating valve and measuring nipples

Order No.	Size	Box Qty. Carton/Inner	List Price
747PRS-04	1/2"	10/1	\$167.61
747PRS-06	3/4"	16/4	\$189.92
747PRS-07	1"	8/2	\$224.17
747PRS-08	1 1/4"	5/1	\$291.02
747PRS-09	1 1/2"	5/1	\$416.44
747PRS-10	2"	1	\$619.39

## cimPRESS™ 787PRS



- **Press X Press**
- Manufactured ISO 9001
- Patented dual O-ring deep socket design that ensures a superior, straighter, positive watertight press connection
- Superior fixed orifice design provides 95% maximum balancing accuracy
- Integral memory stop eliminates rebalancing after service
- One piece construction with balance regulating valve and measuring nipples

Order No.	Size	Box Qty. Carton/Inner	List Price
787PRS-04	1/2"	15	\$144.17
787PRS-06	3/4"	15	\$162.10
787PRS-07	1"	15	\$194.17
787PRS-08	1 1/4"	10	\$291.06
787PRS-09	1 1/2"	10	\$344.62
787PRS-10	2"	10	\$455.98

# cimPRESS™ Strainers

Ideal for filtering: sanitary systems, heating systems, pneumatic systems, waterworks, saturated steam, and gasoline networks.

## 74PRSNL



- **Press X Press**
- Manufactured ISO 9001
- Manufactured from corrosion resistant materials
- CimPRESS design replaces press to thread adapters
- Patented dual O-ring deep socket design that ensures a superior, straighter, positive watertight press connection

**NO HEAD**

Order No.	Size	Box Qty. Carton/Inner	List Price
74PRSNL-04	1/2"	90/30	\$66.25
74PRSNL-06	3/4"	60/20	\$75.85
74PRSNL-07	1"	40/10	\$110.59
74PRSNL-08	1 1/4"	24/6	\$158.23
74PRSNL-09	1 1/2"	16/4	\$197.69
74PRSNL-10	2"	8/2	\$342.83

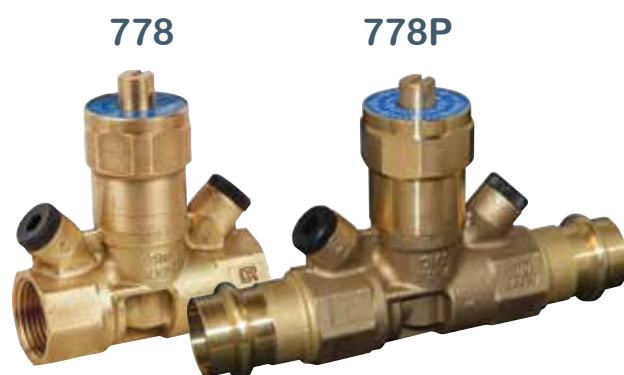
# Thermostatic Balancing Valves

Ideal for: residential/commercial potable water applications, sanitary applications, and heating/cooling applications.

Cim 778 balancing valves allow temperature balancing in domestic hot water recirculation systems. Water temperatures can be easily adjusted by setting its integrated thermostat; no need to remove anything from the system. They guarantee desired temperatures at each point of the system and minimize heat loss. Cim 778 balancing valves feature a by-pass mechanism that intervenes in the case of thermal disinfection against Legionella, and are available with ball valves (2), an inline or swing check valve, and/or strainer.

## How It Works

The Cim 778 thermostatic balancing valve opens and closes in response to the water's temperature. When the water's temperature is too low the Cim 778 opens to allow more water through. When the water's temperature reaches the valve's thermostat set-point the valve closes to allow less water through (the valve never fully closes to ensure water will always flow through the pump). To adjust the water's temperature use a slotted screwdriver to set the valve's thermostat.



- **FNPT X FNPT or PRESS X PRESS**
- Manufactured ISO 9001
- Automatic Legionella disinfection
- Automatic balancing
- Stepless regulation
- Easy set-up of required temperature
- Memory stop eliminates rebalancing service
- EPDM Perox hydraulic seals



Order No.	Size	Box Qty. Carton/Inner	List Price
778-04	1/2"	15/1	\$227.88
778-06	3/4"	15/1	\$247.52
778-07	1"	15/1	\$299.60

Order No.	Size	Box Qty. Carton/Inner	List Price
778P-04	1/2"	15/1	\$275.03
778P-06	3/4"	15/1	\$294.68
778P-07	1"	15/1	\$346.74

## 778 Valve Options

### with Isolation Valves

#### 778V



- **FNPT X FNPT or PRESS X PRESS**

- Manufactured ISO 9001
- Automatic Legionella disinfection
- Automatic balancing
- Stepless regulation
- Easy set-up of required temperature
- Memory stop eliminates rebalancing service
- EPDM Perox hydraulic seals



Order No.	Size	Box Qty. Carton/Inner	List Price
778V-04	1/2"	N/A	\$387.84
778V-06	3/4"	N/A	\$400.99
778V-07	1"	N/A	\$437.64

#### 778PV



Order No.	Size	Box Qty. Carton/Inner	List Price
778PV-04	1/2"	N/A	\$403.90
778PV-06	3/4"	N/A	\$420.93
778PV-07	1"	N/A	\$457.65

## with Inline Check Valve

### 778C



- **FNPT X FNPT or PRESS X PRESS**
- Manufactured ISO 9001
- Automatic Legionella disinfection
- Automatic balancing
- Stepless regulation
- Easy set-up of required temperature
- Memory stop eliminates rebalancing service
- EPDM Perox hydraulic seals

### 778PC



Order No.	Size	Box Qty. Carton/Inner	List Price
778C-04	1/2"	N/A	\$275.29
778C-06	3/4"	N/A	\$298.60
778C-07	1"	N/A	\$372.72

Order No.	Size	Box Qty. Carton/Inner	List Price
778PC-04	1/2"	N/A	\$304.90
778PC-06	3/4"	N/A	\$371.25
778PC-07	1"	N/A	\$440.98

## with Isolation Valves and Inline Check Valve

### 778VC



- **FNPT X FNPT or PRESS X PRESS**
- Manufactured ISO 9001
- Automatic Legionella disinfection
- Automatic balancing
- Stepless regulation
- Easy set-up of required temperature
- Memory stop eliminates rebalancing service
- EPDM Perox hydraulic seals

### 778PVC



Order No.	Size	Box Qty. Carton/Inner	List Price
778VC-04	1/2"	N/A	\$442.85
778VC-06	3/4"	N/A	\$455.56
778VC-07	1"	N/A	\$497.91

Order No.	Size	Box Qty. Carton/Inner	List Price
778PVC-04	1/2"	N/A	\$497.41
778PVC-06	3/4"	N/A	\$523.82
778PVC-07	1"	N/A	\$597.28

## with Isolation Valves, Inline Check Valve, and Strainer

### 778VCS



- **FNPT X FNPT or PRESS X PRESS**
- Manufactured ISO 9001
- Automatic Legionella disinfection
- Automatic balancing
- Stepless regulation
- Easy set-up of required temperature
- Memory stop eliminates rebalancing service
- EPDM Perox hydraulic seals

### 778PVCS



Order No.	Size	Box Qty. Carton/Inner	List Price
778VCS-04	1/2"	N/A	\$373.17
778VCS-06	3/4"	N/A	\$472.27
778VCS-07	1"	N/A	\$575.10

Order No.	Size	Box Qty. Carton/Inner	List Price
778PVCS-04	1/2"	N/A	\$539.77
778PVCS-06	3/4"	N/A	\$578.82
778PVCS-07	1"	N/A	\$695.83



## with Swing Check Valve

778W



- **FNPT X FNPT or PRESS X PRESS**

- Manufactured ISO 9001
- Automatic Legionella disinfection
- Automatic balancing
- Stepless regulation
- Easy set-up of required temperature
- Memory stop eliminates rebalancing service
- EPDM Perox hydraulic seals

778PW



**NO LEAD**

Order No.	Size	Box Qty. Carton/Inner	List Price
778W-04	1/2"	N/A	\$264.64
778W-06	3/4"	N/A	\$315.88
778W-07	1"	N/A	\$363.98

Order No.	Size	Box Qty. Carton/Inner	List Price
778PW-04	1/2"	N/A	\$301.89
778PW-06	3/4"	N/A	\$364.35
778PW-07	1"	N/A	\$431.99

## with Isolation Valves and Swing Check Valve

778VW



- **FNPT X FNPT or PRESS X PRESS**

- Manufactured ISO 9001
- Automatic Legionella disinfection
- Automatic balancing
- Stepless regulation
- Easy set-up of required temperature
- Memory stop eliminates rebalancing service
- EPDM Perox hydraulic seals

778PVW



**NO LEAD**

Order No.	Size	Box Qty. Carton/Inner	List Price
778VW-04	1/2"	N/A	\$442.02
778VW-06	3/4"	N/A	\$451.05
778VW-07	1"	N/A	\$490.47

Order No.	Size	Box Qty. Carton/Inner	List Price
778PVW-04	1/2"	N/A	\$492.62
778PVW-06	3/4"	N/A	\$519.65
778PVW-07	1"	N/A	\$591.50

## with Isolation Valves, Swing Check Valve, and Strainer

778VWS



- **FNPT X FNPT or PRESS X PRESS**

- Manufactured ISO 9001
- Automatic Legionella disinfection
- Automatic balancing
- Stepless regulation
- Easy set-up of required temperature
- Memory stop eliminates rebalancing service
- EPDM Perox hydraulic seals

778PVWS



**NO LEAD**

Order No.	Size	Box Qty. Carton/Inner	List Price
778VWS-04	1/2"	N/A	\$497.86
778VWS-06	3/4"	N/A	\$531.67
778VWS-07	1"	N/A	\$615.07

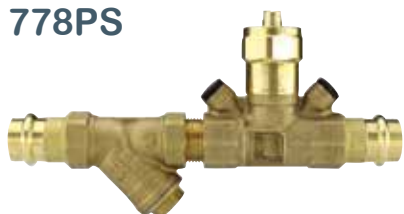
Order No.	Size	Box Qty. Carton/Inner	List Price
778PVWS-04	1/2"	N/A	\$539.77
778PVWS-06	3/4"	N/A	\$578.82
778PVWS-07	1"	N/A	\$695.83

## with Strainer

### 778S



### 778PS



- **FNPT X FNPT or PRESS X PRESS**
- Manufactured ISO 9001
- Automatic Legionella disinfection
- Automatic balancing
- Stepless regulation
- Easy set-up of required temperature
- Memory stop eliminates rebalancing service
- EPDM Perox hydraulic seals

**NO LEAD**

Order No.	Size	Box Qty. Carton/Inner	List Price
778S-04	1/2"	N/A	\$267.65
778S-06	3/4"	N/A	\$322.79
778S-07	1"	N/A	\$372.96

Order No.	Size	Box Qty. Carton/Inner	List Price
778PS-04	1/2"	N/A	\$299.53
778PS-06	3/4"	N/A	\$361.89
778PS-07	1"	N/A	\$433.10

## with Isolation Valves and Strainer

### 778VS



### 778PVS



- **FNPT X FNPT or PRESS X PRESS**
- Manufactured ISO 9001
- Automatic Legionella disinfection
- Automatic balancing
- Stepless regulation
- Easy set-up of required temperature
- Memory stop eliminates rebalancing service
- EPDM Perox hydraulic seals

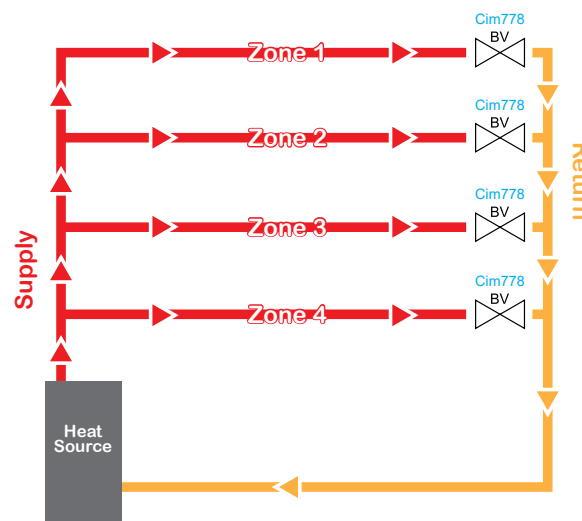
**NO LEAD**

Order No.	Size	Box Qty. Carton/Inner	List Price
778VS-04	1/2"	N/A	\$440.23
778VS-06	3/4"	N/A	\$453.42
778VS-07	1"	N/A	\$490.03

Order No.	Size	Box Qty. Carton/Inner	List Price
778PVS-04	1/2"	N/A	\$492.62
778PVS-06	3/4"	N/A	\$518.58
778PVS-07	1"	N/A	\$590.43

## 778 Installation

Install the Cim 778 in the return line of each zone. When the supply water's temperature reaches the valve's thermostat set-point the valve closes and allows the water to remain in the supply, where it is utilized by the other zones. When the temperature of the supply is lower than the valve's thermostat set-point the valve opens and allows the water to return to the heat source where it is warmed and returned to the supply.





# cimPRESS™ Inline Check Valves

Ideal for: plumbing, heating, waterworks, sanitary systems, compressed air systems, autoclaves, and pumps.

## 30PRSNL



**NO LEAD**

Order No.	Size	Box Qty. Carton/Inner	List Price
30PRSNL-04	1/2"	120/30	\$54.58
30PRSNL-06	3/4"	80/20	\$66.93
30PRSNL-07	1"	48/12	\$92.23
30PRSNL-08	1 1/4"	32/8	\$131.93
30PRSNL-09	1 1/2"	24/6	\$182.47
30PRSNL-10	2"	8/2	\$293.01

## 30XLC



**For Use With  
XLC Jaws Only**

- **Press X Press**
- Manufactured ISO 9001
- Suitable for vertical or horizontal pipelines
- Check valve rubber seat surface for leak proof seal
- Contains Lead

Order No.	Size	Box Qty. Carton/Inner	List Price
30XLC-11	2 1/2"	Order	\$501.75
30XLC-12	3"	Order	\$569.37
30XLC-14	4"	Order	\$1083.05

# cimKIT™ Tankless Water Heater Valve Kits

Designed to work with all brands of tankless water heaters. California AB1953 and Vermont S.1952 Compliant



Includes Pressure  
Relief Valve

## cim 460NL

FIPT X FIPT



PATENT PENDING

**NO LEAD**

Order No.	Size	Box Qty. Carton/Inner	List Price
460NL-06-KIT	3/4"	10/1	CALL

### Features

- Color coded red and blue handles safely distinguish hot and cold supply lines for fast, simple installation
- 600 WOG full port ball valves and body provide heavy duty performance and maximum system efficiency
- Patented design provides handle access even in recessed boxes

## cim 461NL

Sweat X FIPT



PATENT PENDING

**NO LEAD**

Order No.	Size	Box Qty. Carton/Inner	List Price
461NL-06-KIT	3/4"	10/1	CALL

## cim 462NL

Press X FIPT



PATENT PENDING

**NO LEAD**

Order No.	Size	Box Qty. Carton/Inner	List Price
462NL-06-KIT	3/4"	10/1	CALL

- Easily accessed full port flushing/drain valves assure system maintenance and diagnostic testing of water heater
- Integrated 3/4" outlet for included pressure relief valve
- Can be used with copper, CPVC and PEX

# cimPRESS™ Swing Check Valves

Ideal for: sanitary systems, heating systems, pneumatic systems, autoclave, and pumps.

## 80PRF (PRS)



- **Press X Press**
- Manufactured ISO 9001
- Suitable for vertical or horizontal pipelines
- Check valve rubber seat surface for leak proof seal
- Contains Lead

Order No.	Size	Box Qty. Carton/Inner	List Price
80PRS-04	1/2"	90/30	\$93.68
80PRS-06	3/4"	60/20	\$124.39
80PRS-07	1"	40/10	\$172.47
80PRS-08	1 1/4"	24/6	\$225.48
80PRS-09	1 1/2"	16/4	\$287.87
80PRS-10	2"	8/2	\$479.72

## 80XLC



- **Press X Press**
- Manufactured ISO 9001
- Suitable for vertical or horizontal pipelines
- Check valve rubber seat surface for leak proof seal
- Contains Lead

Order No.	Size	Box Qty. Carton/Inner	List Price
80XLC-11	2 1/2"	Order	\$485.45
80XLC-12	3"	Order	\$628.30
80XLC-14	4"	Order	\$1040.06

For Use With XLC Jaws Only

## Valve Accessories

Ideal for: residential/commercial potable water applications, sanitary applications, and heating/cooling applications.

### cim 971



Handle Conversion Adapter

For Use on 1220NL

- Does not work with Cim Lock Valves (963, 954, 957)

Order No.	Size	Box Qty. Carton/Inner	List Price
971-0406	1/2" - 3/4"	10	\$7.88
971-0708	1" - 1 1/4"	10	\$8.56
971-0910	1 1/2" - 2"	10	\$8.75

### cim 530 Series



Handle Extension

Order No.	Size	Box Qty. Carton/Inner	List Price
530	1/2" - 3/4"	N/A	\$18.04
531	1" - 1 1/4"	N/A	\$21.46
532	1 1/2" - 2"	N/A	\$26.82
533	2 1/2" - 3", 4"	N/A	\$64.37

### cim 3406



Drain Valve for Strainers

SPECIAL ORDER

- Works with Cim620 and Cim226 ball valves
- Drain with hose connection and protective cap

Order No.	Size	Box Qty. Carton/Inner	List Price
3406-04	1/2"	160/40	\$6.68
3406-06	3/4"	200/50	\$8.71

# Balancing Valves

Ideal for: residential/commercial potable water applications, sanitary applications, and heating/cooling applications.

**cim 747NL**



**NO LEAD**

• **FNPT X FNPT**

- Manufactured ISO 9001
- Superior fixed orifice design
- Memory stop eliminates rebalancing service
- One-piece construction includes balance regulating valve and measuring nipples
- 95% maximum balancing accuracy

Order No.	Size	Box Qty. Carton/Inner	List Price
747NL-04	1/2"	20/5	\$111.14
747NL-06	3/4"	16/4	\$137.25
747NL-07	1"	16/4	\$152.32
747NL-08	1 1/4"	8/2	\$203.05
747NL-09	1 1/2"	8/2	\$292.62
747NL-10	2"	4/2	\$411.44

**cim 787**



• **FNPT X FNPT**

- Manufactured ISO 9001
- Superior fixed orifice design
- Memory stop eliminates rebalancing service
- One piece construction includes balance regulating valve and measuring nipples
- 95% maximum balancing accuracy

Order No.	Size	Box Qty. Carton/Inner	List Price
787-04	1/2"	15/1	\$73.69
787-06	3/4"	15/1	\$80.34
787-07	1"	15/1	\$109.59
787-08	1 1/4"	10/1	\$168.51
787-09	1 1/2"	10/1	\$234.66
787-10	2"	10/1	\$305.26

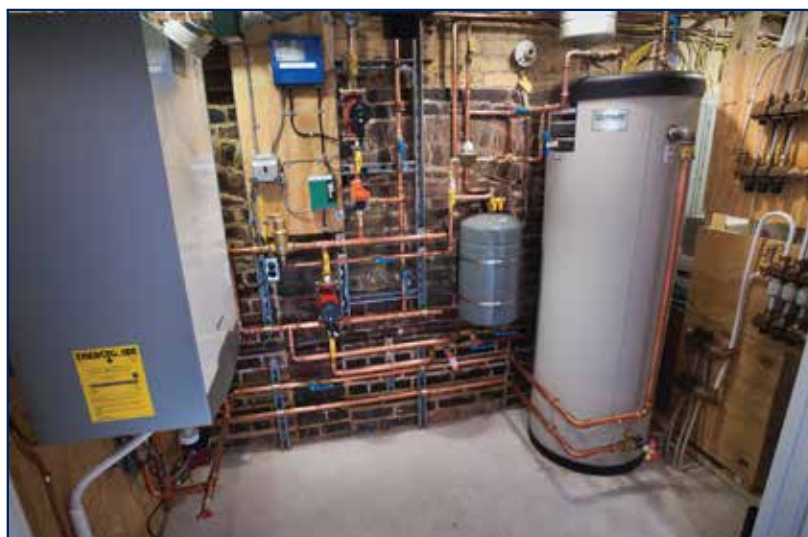
**cim 787CC**



• **Copper X Copper**

- Manufactured ISO 9001
- Superior fixed orifice design
- Memory stop eliminates rebalancing service
- One piece construction includes balance regulating valve and measuring nipples
- 95% maximum balancing accuracy

Order No.	Size	Box Qty. Carton/Inner	List Price
787CC-04	1/2"	15	\$73.69
787CC-06	3/4"	15	\$80.34
787CC-07	1"	15	\$109.59
787CC-08	1 1/4"	10	\$168.51
787CC-09	1 1/2"	10	\$234.66
787CC-10	2"	10	\$305.26





100 Quaker Lane • Malvern, PA 19355

Phone: 877.228.9246 (877-2BUYCIM) • Fax: 877.232.9246 (877-2FAXCIM)

E-mail: [info@cimberiovalve.com](mailto:info@cimberiovalve.com)

[www.cimberiovalve.us](http://www.cimberiovalve.us)